

A unique fusion of stainless steel and granite, individually beautiful, oozing environmental harmony, timeless elegance, and sophisticated calm.

Manufactured and finished in brushed stainless steel with a granite fascia
 Select from a palette of 14 granite shades.
 Bespoke service available.
 Optional towel rail for kitchen and bathroom applications.

Specifications

Models Available	8
Materials	Granite / Brushed Stainless Steel
Standard Finish	See over page
Connections	1/2" BSP
Delivery Details	Made to order : 4 - 8 Weeks
Guarantee	2 years
Output Range	270 - 927W
Stock availability	Non Stock product



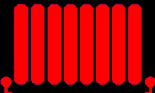
CODE	Height (mm)	Width (mm)	Depth (mm)	Projection (mm)	Power (watts)
E40/40	400	400	50	80-96	270
E80/40V	800	400	50	80-96	494
E120/40V	1200	400	50	80-96	718
E160/40V	1600	400	50	80-96	943
E40/80H	400	800	50	80-96	494
E40/120H	400	1200	50	80-96	718
E40/160H	400	1600	50	80-96	943
E80/80	800	800	50	80-96	927

Please see page two for our selection of stunning finishes

[Outputs: 90/70/20 Δt 60°C EN442]

[Dimensions in millimetres]

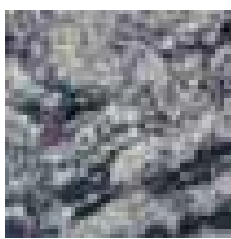
Radiator Centre Ltd : 2 Grand Parade, Polegate, East Sussex, BN26 5HG
 www.radiatorcentre.com : info@radiatorcentre.com : Tel 01323 486848 : Fax 01323 486687



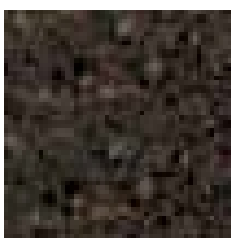
Radiator Centre Ltd : 2 Grand Parade, Polegate, East Sussex, BN26 5HG
www.radiatorcentre.com : info@radiatorcentre.com : Tel 01323 486848 : Fax 01323 486687



nero



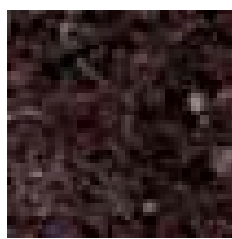
amadeus



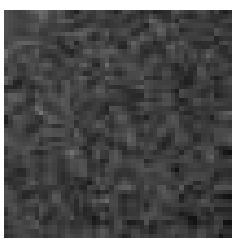
brazil



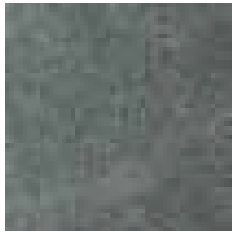
silver cloud



labrador



star



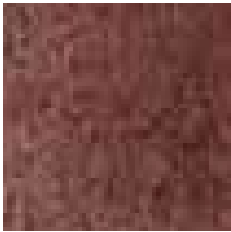
bon accord



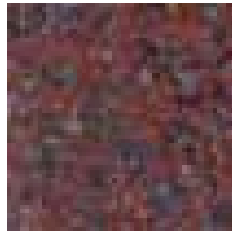
verde



karale



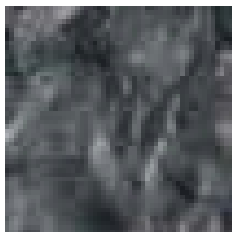
icon brown



st john's red



marinace



matrix



emerald pearl

price bands

1 : nero / silver cloud / bon accord / icon brown

2 : amadeus / labrador / verde / emerald pearl / marinace

3 : brazilian / star / karale / st john's red / matrix / **all Silestone**