

New Product from Radiator Centre Ltd

Bright, white and extremely light....

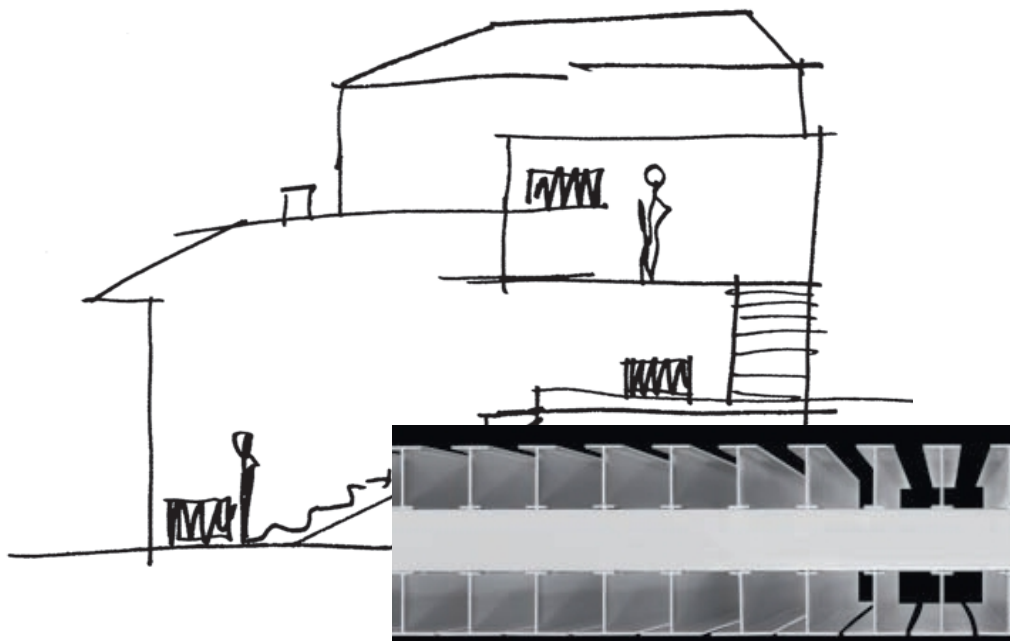
Why settle for boring steel panel radiators when you can use these contemporary Aluminium, high output models, delivering style and warmth – Even with low temperature heating systems

Low cost and lightweight

Suitable for systems using heat pumps

Specifications

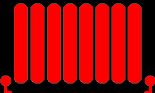
Models Available	19
Materials	Aluminium
Standard Finish	White / Anthracite
Connections	1/2" BSP
Delivery Details	Stocked items: 3-10 working days
Guarantee	5 years
Output Range	663 - 3887W
Stock availability	All models In stock



[Outputs: 90/70/20 Δt 60°C EN442]

[Dimensions in millimetres]

Radiator Centre Ltd : 2 Grand Parade, Polegate, East Sussex, BN26 5HG
www.radiatorcentre.com : info@radiatorcentre.com : Tel 01323 486848 : Fax 01323 486687

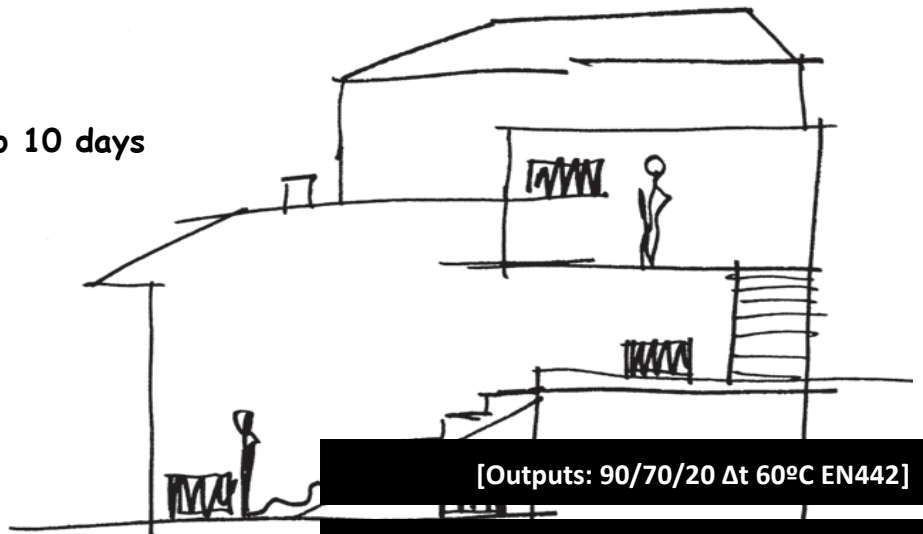
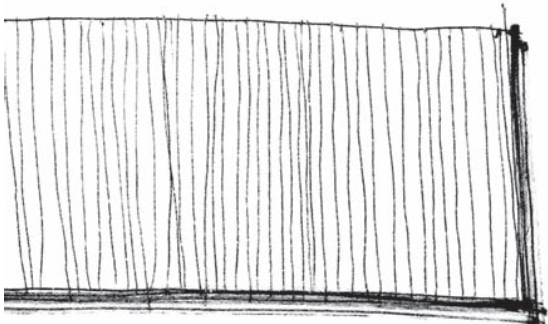


CODE	Height (mm)	Width (mm)	Depth (mm)	Projection (mm)	Power (watts)
Z3550	373	522	70	100	663
Z3560	373	622	70	100	789
Z3580	373	822	70	100	1043
Z35100	373	1022	70	100	1296
Z35120	373	1222	70	100	1551

Z5050	523	522	70	100	865
Z5060*	523	622	70	100	1031
Z5080*	523	822	70	100	1363
Z50100*	523	1022	70	100	1695
Z50120*	523	1222	70	100	2026
Z50160	523	1644	70	100	2727
Z50200	523	2044	70	100	3390

CODE	Height (mm)	Width (mm)	Depth (mm)	Projection (mm)	Power (watts)
Z6050	623	522	70	100	993
Z6060*	623	622	70	100	1183
Z6080*	623	822	70	100	1563
Z60100*	623	1022	70	100	1994
Z60120*	623	1222	70	100	2324
Z60160	623	1644	70	100	3127
Z60200	623	2044	70	100	3887

- * = Available in Anthracite finish
- = typically delivered within 3 days
- = "lorry delivery", could take up to 10 days



[Dimensions in millimetres]