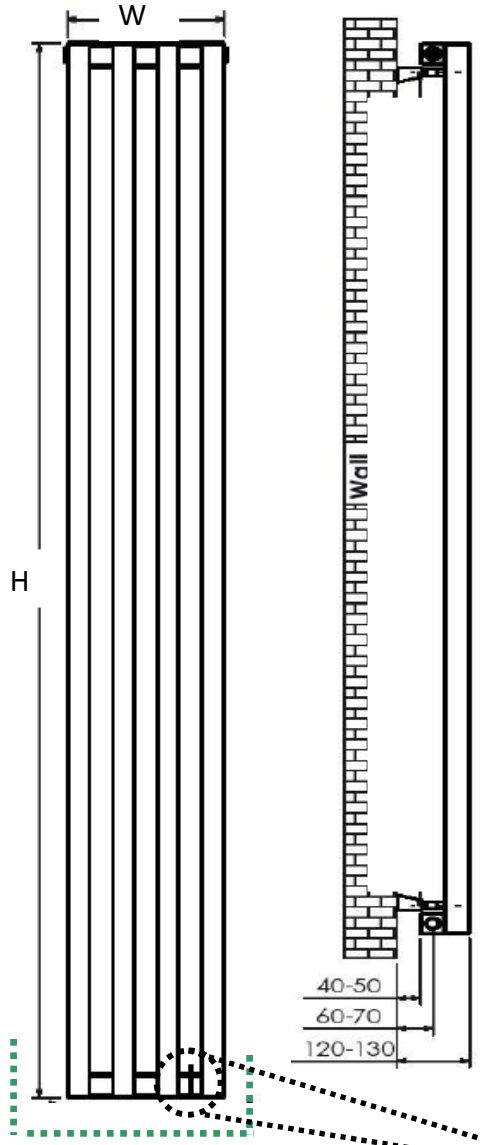


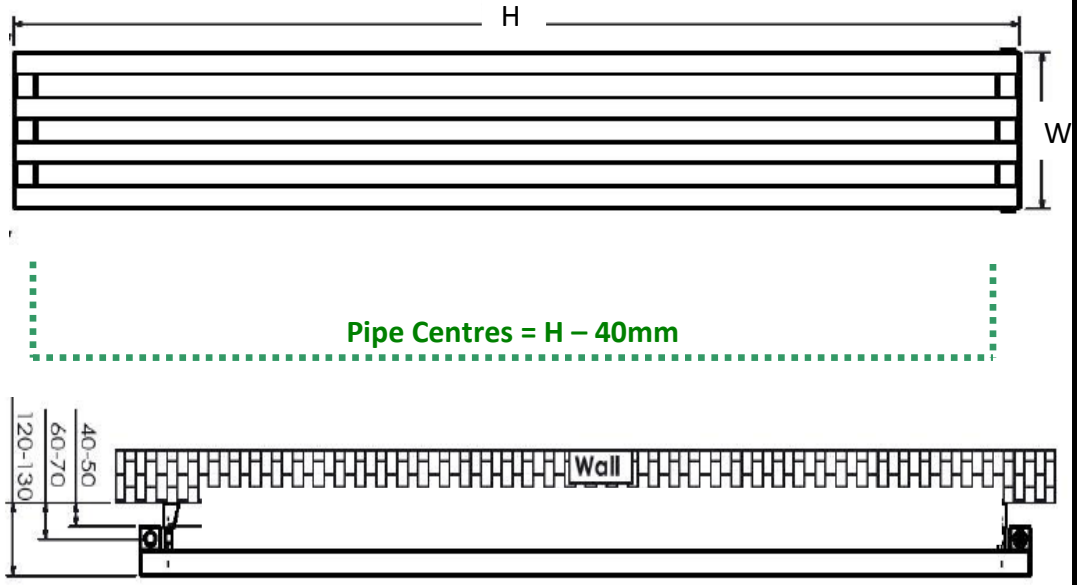


Connections Detail : Vertical installation



Pipe Centres = Width + valve centres
 ie: Width + 80mm with Standard RadCen Valves
 (PLEASE NOTE: Flow connection = Right hand side)

Connections Detail : Horizontal installation



Pipe Centres = H - 40mm

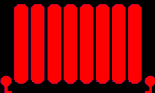
CODE	Height (mm)	Width (mm)	Depth (mm)	Projection (mm)	Power (watts)
Colossus 1803	1800	200	70	100	780
Colossus 1804	1800	280	70	100	1040
Colossus 1805	1800	360	70	100	1300
Colossus 1806	1800	440	70	100	1561
Colossus 1604	1600	280	70	100	925
Colossus 1608	1600	600	70	100	1850

Please note : Flow diverter must be removed with a screwdriver for horizontal installation

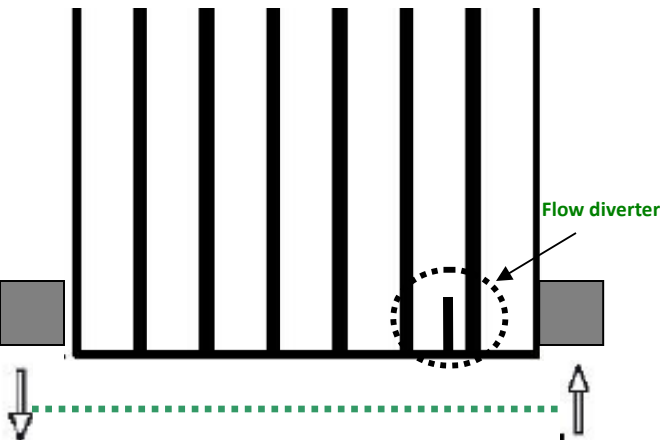
[Outputs: 90/70/20 Δt 60°C EN442]

[Dimensions in millimetres]

Radiator Centre Ltd : 2 Grand Parade, Polegate, East Sussex, BN26 5HG
 WWW.radiatorcentre.com : info@radiatorcentre.com : Tel 01323 486848 : Fax 01323 486687

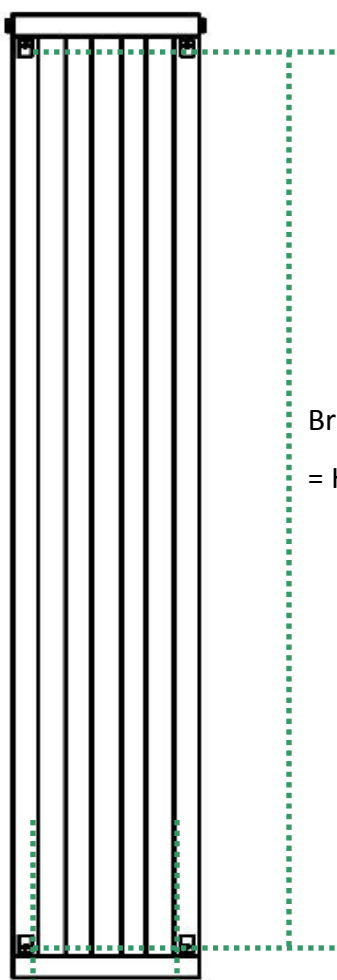
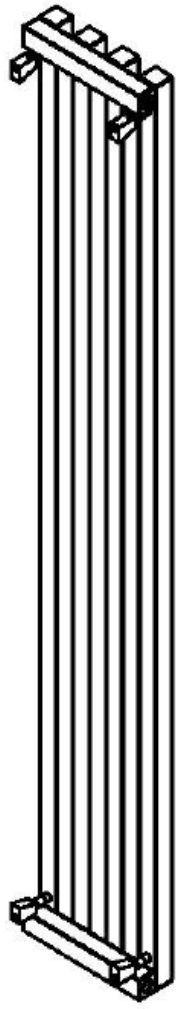


Connections Detail : Vertical installation
(Optional extra : 90MF connection)



Optional 90MF Connections create downward facing connections @ W + 40mm (Overall clearance inc 90MF block = W + 70mm)
(PLEASE NOTE: Flow connection = Right hand side)

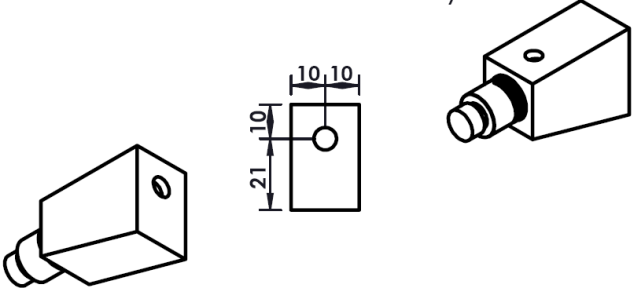
Bracket Detail :



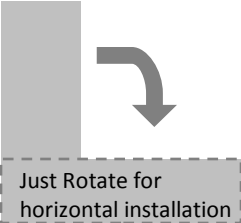
Bracket Centres :
= H - 114mm

Bracket Centres :
= W - 40mm

Bracket Assembly



Please note :
Flow diverter must be removed with a screwdriver for horizontal installation



[Outputs: 90/70/20 Δt 60°C EN442]

[Dimensions in millimetres]

Radiator Centre Ltd : 2 Grand Parade, Polegate, East Sussex, BN26 5HG
 WWW.radiatorcentre.com : info@radiatorcentre.com : Tel 01323 486848 : Fax 01323 486687